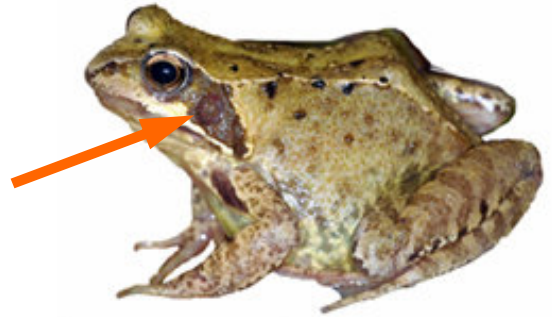


## Amphibian Identification

Photographs kindly supplied by Fred Holmes, Phyl King and The HCT.

### Common frog

Differs from common toad in having smooth, moist skin. Only likely identification problem due to naturally variable coloration. Dark patch usually present behind eye.



Fred Holmes

### Common toad



Rough skin. Unlikely to be confused with any other species. The other toad native to the UK, the natterjack, is a rare species with a limited range and so is unlikely to be encountered.

Toad spawn laid in gelatinous strings, wrapped around vegetation. Less obvious than common frog spawn.



On hatching, common frog and toad tadpoles are black. As they develop, common frog tadpoles become mottled with bronze, whereas toad tadpoles remain black.



Phyl King

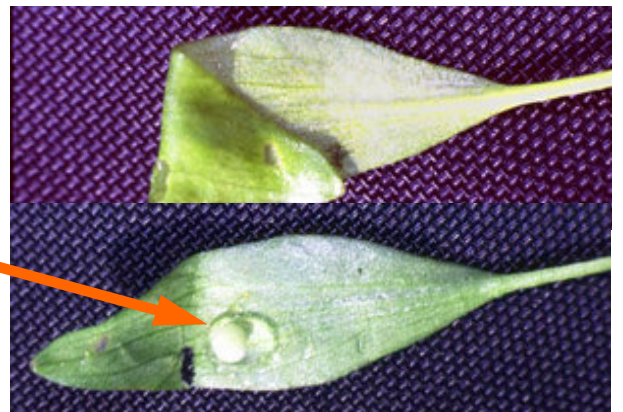
### Newt eggs

Newt eggs are usually wrapped, singly, in vegetation. Leaves folded around great crested newt eggs are particularly conspicuous. To identify, unfold leaf. Identification of undeveloped eggs is easiest.



Great crested newt eggs are white, or white with a hint of green or sometimes orange.

Eggs of smooth newts cannot be distinguished from those of palmate newts. Grey or beige.



## Smooth newt

Grows to about 10 cm. Both sexes have orange or yellow belly stripe, with rounded black spots. Male has undulating crest running from head to tail tip.

Fred Holmes



Female



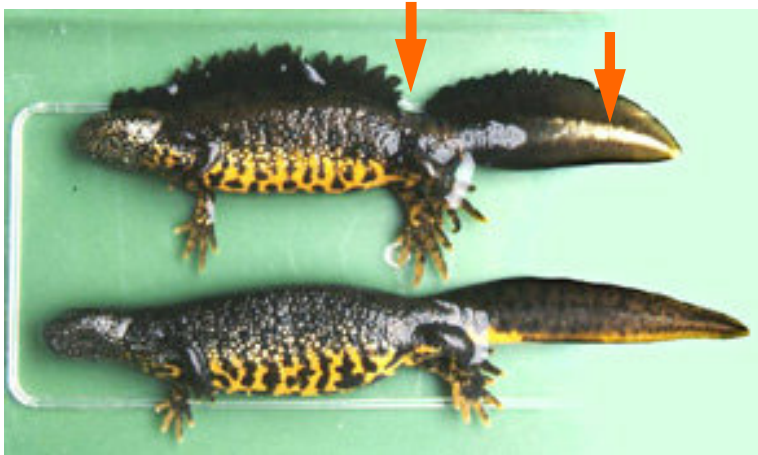
Male

## Great crested newt

Grows to 16 cm, but usually smaller. Crest in male has break at base of tail. Silvery-white strip towards rear of tail conspicuous.

Both sexes have yellow/orange bellies with irregular black spots. Both sexes have rough, granular skins.

Strictly protected species, requiring a licence to handle or disturb.



## Palmate newt

Grows to 9 cm. Male has ridge running along back, rather than a crest. Dark, webbed hind feet, and tail ends in filament.

Fred Holmes



Hind foot of male palmate newt.



Fred Holmes



Females look similar to smooth newts. Throat of palmate newt has no pigment (looks pink). Throat of female smooth newt is off-white and usually spotted. Also, there are two pale coloured nodules on the underside of the hind feet of female palmate newts.



Female palmate



Female smooth

## Newt larvae

Examine well-developed larvae (late April to July, or to August for great crested newts).

Phyl King



Great crested newt larvae (to 5 cm) have long toes and blotches of dark pigmentation on tail fins.



Palmate and smooth newt larvae (to 3 cm) indistinguishable in field—but do not have long toes or spotted tail fins of great crested newt larvae.